

PRODUCT SUPPLY



Enquire Here



BEEF



As the limits of the globe become more attainable and the expectations and desires for quality products is increasing, our team at [Active Global Exports](#) is capitalising on this opportunity to connect you with the world's best quality commodities.

Proudly, Active Global Exports, founded in New south Wales, Australia, was developed to export and share the fine quality fresh fruits, vegetables and prime meats available to us with our neighbouring countries and beyond. As our networks expanded due to client demands and solid, reliable supplier relationships today Active Global Exports services Asia, Europe and the Middle East with Agricultural, Protein and Energy supplies from Australia, South America and Europe.

Our business headquarters remains in Sydney Australia with branches in Sao Paolo, Barcelona and Singapore.

OUR VISION

To trade and service first class commodities with a strong focus on the Global market. We strive for successful trading across multiple ranges of commodities.

Our focus on a highly efficient red meat operation, integrated from breeding to wholesale, whilst enhancing value to surrounding communities, the national livestock sector and the customer.

OUR MISSION

Active Global Exports provides direct international foreign relations between nations and corporations. We continue to strive towards becoming an integral part of our industry with a culture and ethos that understands and partners its stakeholders at every step of the supply chain.

A well routed multi-commodity trader working in collaboration with only the most trustworthy and solid internationally recognized service providers in the industry insuring reliability and security on all its supplies.

In the beef industry our vision is achieved by partnering with farmers that are adopting modern breeding technologies, efficient feeding practices and optimum slaughtering and distribution services, while maintaining internationally accepted standards of hygiene and management.



Core Values

Our philosophy is to help our partners grow **Sustainable, Repeatable and Ethical** businesses. Active Global Exports practices the highest of ethical standards developed by the critical attributes of trust and transparency to bring buyers and sellers together in partnership. We are committed to building on our experience and expertise to ensure that we focus on developing business relationships, both big and small, nurturing the mutual respect of individual corporations and nations as a whole whilst protecting our global environment. Active Global Exports offers only secure, transparent and well-defined process and procedures to meet the challenging needs and desires of the clients and consumers.

Strategies

A sourcing and supply company with a focus on leveraging business and government contacts. As experts in collective international trade, we specialise in negotiating and transacting hard and soft commodity deals, as well as other cross-border business opportunities.

Active Global Exports has partnerships directly connected to registered exporters and producers. Our passionate team prides itself on an excellent reputation in the market due to our focus on the building of strategic relationships. With government support and investor participation in the industry we hold a position as a global and renowned exporter.

Working and build relationships with global business partners that own production assets, such as refineries, concessions or mines (for coal, iron ore and energy), abattoirs (for meat processing), or farms (for grain production).

Goals

To continue developing our strategic relationships and building on the foundations of an impeccable reputation as a passionate reliable and valuable asset to all our clients and suppliers.

Objectives

With a focus on Customer Service, Active Global Exports are committed to meeting the needs of our partners at every step, and in every transaction. We provide quality service to our partners from introduction through to execution. Our customer service is based around their needs. We work with our partners, and are by their side at every step of the transaction to ensure that they reach their goals.

Action Plans

Active Global Exports have established a loyal and solid database of quality customers with a proven track record. We are always seeking to service their growing demand of a broader range of products.

Working directly with farmers and supply companies enables us to service our customers' expanding scope of supply with all agricultural, and energy products.

All our contracts are governed by the ICC so that customers and suppliers are sure to be signing a contract with clearly defined international rules. Within each contract our products undergo SGS inspection and certification.



Active Global Exports has strategically taken advantage to secure the supply chain in vital areas, ensuring strategic sourcing and suppliers focused alliances that have contributed to the economic uplift of rural and large-scale producers of beef. We have developed national representation through a network of wholesaler depots in strategic geographic locations with further expansion planned for the future. Active Global Exports has vested interest in the growth and development of large-scale communal cattle herds. The communal herd represents the mainstay of the beef industry and is critical for the sustainability of future business.



AUSTRALIAN PREMIUM BEEF

COUNTY OF ORIGIN

Australia is renowned as one of the world's most efficient producers of cattle. The Australian Meat and Livestock Industry has a long-term commitment to food safety, product integrity and traceability, and its product quality complements Australia's focus on responsibility in meeting the demands of its international customers. Every Australian supplier knows the level of responsibility carried out from "paddock to plate" is very high. Tracing meat comes with the program as every supplier in Australia comes with what is known as a PIC code (Property Identification Code). Every processor must process animals from a valid PIC code (which numbers varies from state to state). This is to ensure tracing is possible and that accountability for high quality beef remains high.

CURRENT EXPORT GRADES

Including, but not limited to:

- Pastoral Beef Products
- Black Angus Beef Products
- Grain fed Beef
- Grass fed Beef
- NFAS 100day Grain fed Beef
- Wagyu Beef
- Offals
- Bone in products (Neckbone, Brisket Bones, Femur, Patella)
Also Lamb, Mutton (16kg-24kg)

THE ABERDEEN ANGUS

The Aberdeen Angus meat is one of the world's most soughtafter BEEF products.

The Angus are bred in the southern parts of Australia (South WA, South Australia, Victoria and Tasmania) due to their weather which in turn is optimal for breeding.

Angus cows are on average 650 kg while their male counterparts (Steers) can go up to 750kg.

They yield approximately 52-55% which is roughly (350kg for Females and 390kg for Males, and Bulls).



THE WAGYU

The Wagyu is an icon of fine Japanese art. Australia is the largest breeder of Wagyu cattle outside of Japan. They are generally on special feedlot programs before processed. This is to ensure the marbling is mature and ready for consumption. They are generally fed with Corn, Grain and Soybean Meal.

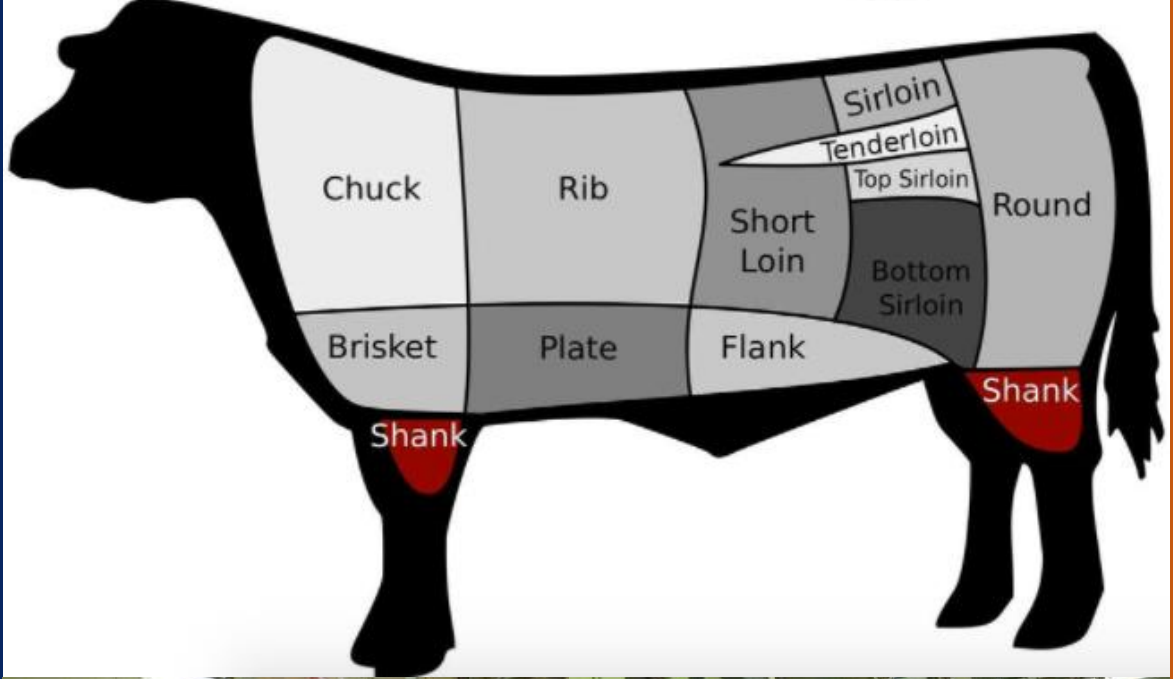
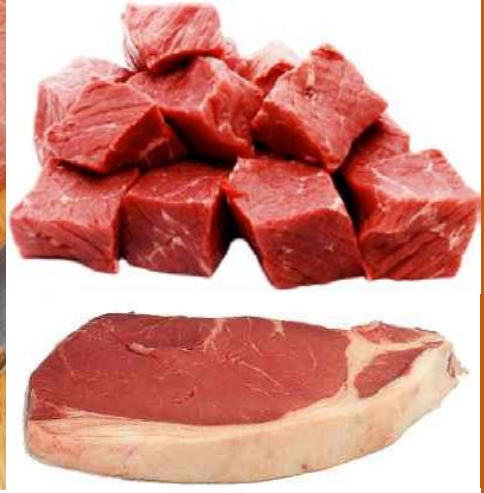
Wagyu cows can range up to 600kg while the Steers can reach up to 700kg. Their yield tends to better than other cows due to their strict diet. They can reach 360kg-420kg carcass weight.



THE VEAL

The Veal is the meat (often dairy breeds and male). The Veal industry in Australia supports lot feeding Veal in order for them to grow its bone density and mature before it is processed. Veals are usually processed under a year old (35-40 weeks). They are mostly 240-300kg live weight (150 kg carcass weight).





AUSTRALIAN PREMIUM BEEF